

# MONTHLY MEMBERSHIP PROGRESS REPORT

LOCATION REP OF SOUTH AFRICA

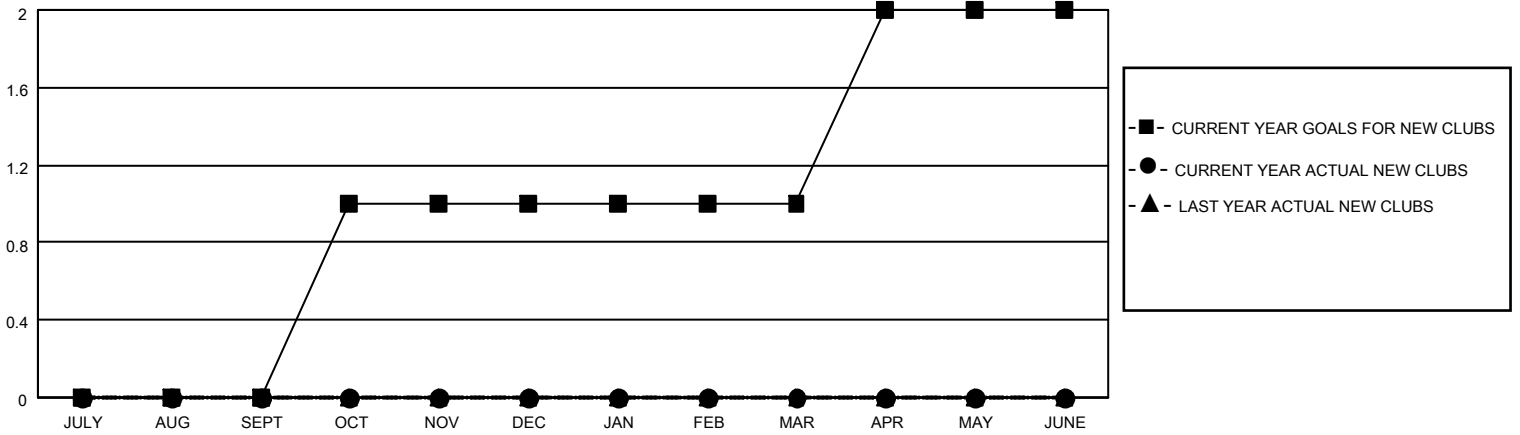
District 410 E

Results as of: 4/30/2023

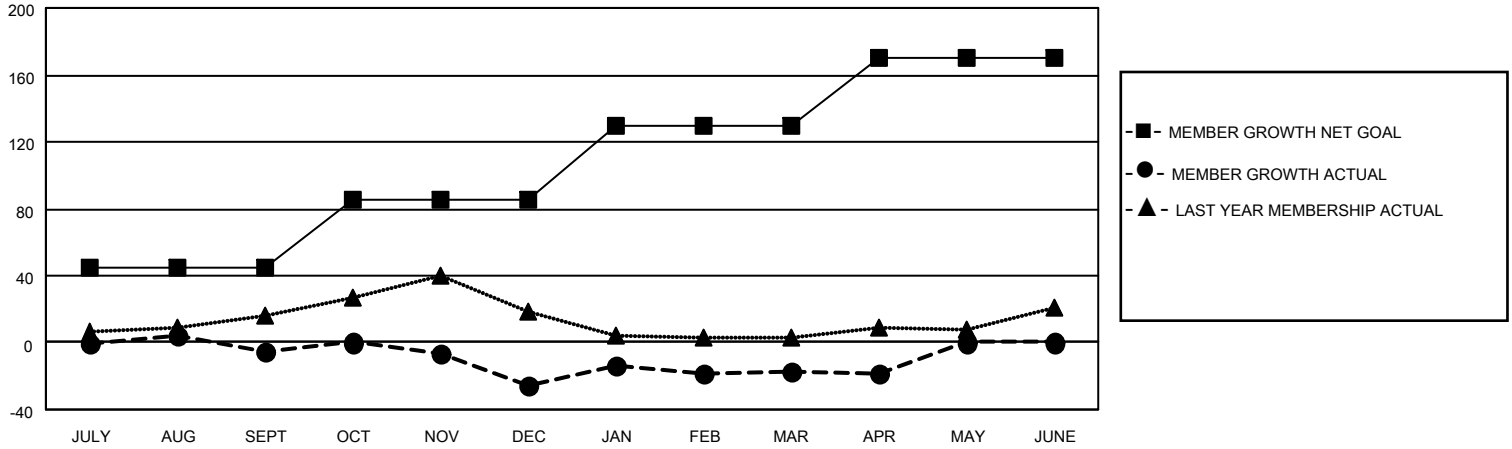
Clubs			
RESULTS FOR 2022-2023			
QUARTER	NEW CLUB GOAL	NEW CLUBS	DROPPED CLUBS
JULY/AUG/SEPT	0	0	0
OCT/NOV/DEC	1	0	0
JAN/FEB/MAR	0	0	0
APR/MAY/JUNE	1	0	0

Members			
RESULTS FOR 2022-2023			
QUARTER	MEMBER GROWTH NET GOAL	MEMBER GROWTH ACTUAL	DROPPED MEMBERS ACTUAL (including transfers)
JULY/AUG/SEPT	45	30	28
OCT/NOV/DEC	40	34	48
JAN/FEB/MAR	45	46	34
APR/MAY/JUNE	40	22	18

**GOALS AND ACTUAL NEW CLUBS CUMULATIVE**



**GOALS AND ACTUAL MEMBERS CUMULATIVE**



**DROPPED CLUBS: 0**

**35 CLUBS OF 66 ADDED 1 OR MORE NEW MEMBERS**

**GENDER DISTRIBUTION**

MALE	493 (50.00%)
FEMALE	493 (50.00%)
NON BINARY	0 (0.00%)
PREFER NOT TO ANSWER	0 (0.00%)

**DROPPED MEMBERS**

[CLICK HERE FOR CUMULATIVE MEMBERSHIP DATA](#)

DECEASED	13
CLUB CANCELLED	0
OTHER	115
<b>TOTAL</b>	<b>128</b>

TOTAL FAMILY UNIT MEMBERS 283

FAMILY MEMBERS PAYING HALF DUES 147